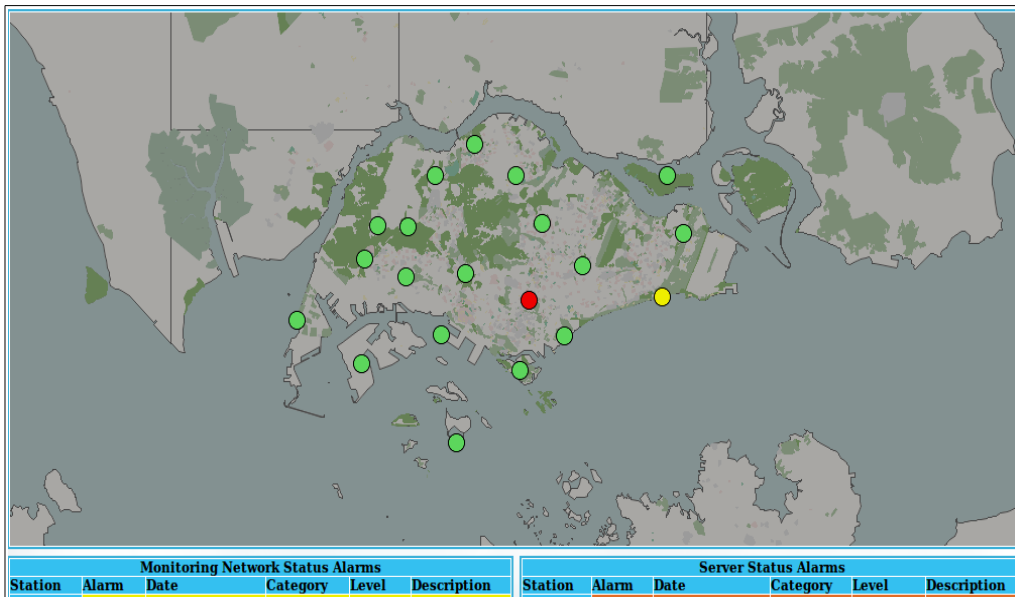


Apertum

Volume 14

Airviro User's Reference



Working with Indico Supervision Supervising the system

CONTENT

14.1 INTRODUCTION.....	5
14.1.1 FUNCTIONALITY.....	5
14.2 GETTING STARTED.....	6
14.3 MAIN WINDOW.....	6
14.4 MONITORING ALARMS.....	8
14.4.1 MONITORING NETWORK STATUS ALARMS.....	8

14.1 Introduction

The Indico Supervision Module is an Airviro user interface, that is used to show the status of active stations on a map. The Supervision also monitors network status alarms and server status alarms. Below that map are details of the latest alarms shown. There is also a table with alarms from the domain that supervises the status of the computer.

14.1.1 Functionality

Unlike other Airviro modules, the Indico Supervision Module doesn't need Java Runtime Environment that is JAVA JRE (run time plug-in) to be installed and enabled in the web browser.

This Airviro module can be executed and accessed using a PC or other device running Internet Explorer 9 or other internet browsers based on Mozilla like Firefox and Opera.

After entering the user name and password, a working domain must be selected and finally the **Indico Supervision** module has to be selected.

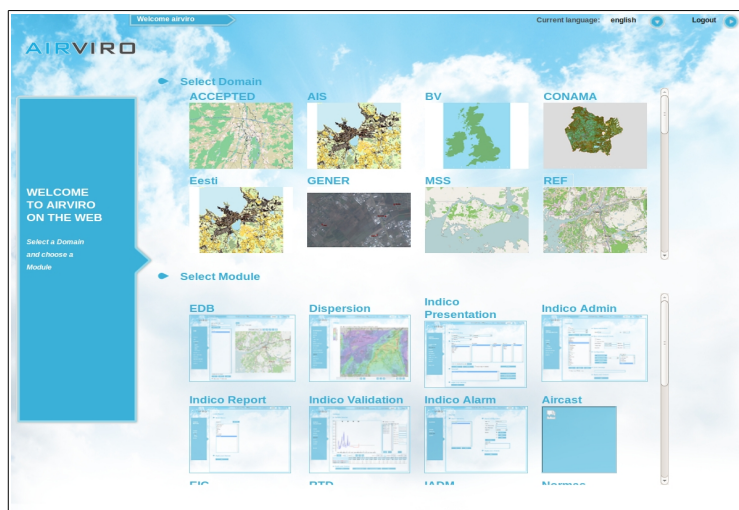


Figure 14.1. Select Domain and Module.

14.2 Getting started

Once Airviro has been properly installed on the *server*, you can begin using it by typing the correct URL in your web browser over Intranet/Internet. The web interface controls all web modules.



Figure 14.2. Welcome to Airviro on the web.

After logging in with user-ID and password, the user must select an available domain and choose an Airviro web module. (See *Figure 14.1. Select Domain and Module.*)

In **Current application** you can see the actually selected Module. Using the arrow button You can choose another module.

Click in the arrow button **Current language** to select the language to work with. In version 4.0 this function is not available yet.

With **Logout** you can close the Airviro windows and return to the login window.

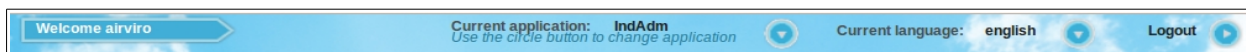



Figure 14.3 .Welcome Airviro.

14.3 Main window

When the Indico Supervision has been selected, the user gets the following options available in the Main window:

- Refresh: is used to manually refresh the displayed data or to specify the refresh interval: Every minute, 5 minutes, 10 minutes, 15 minutes, 30 minutes or 1 hour.
-  This button is used to maximize the whole window.

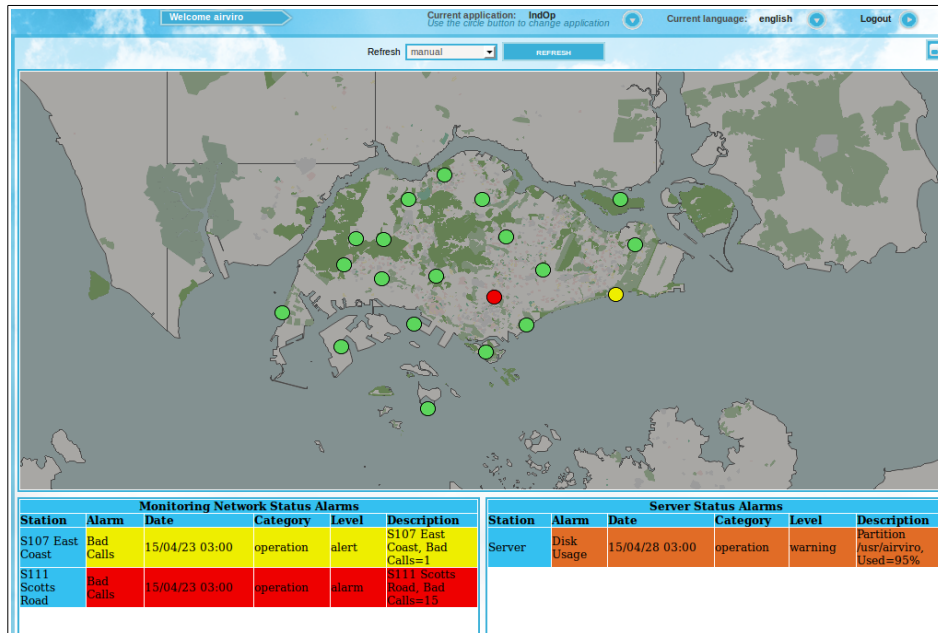


Figure 14.4 Indico Supervisor

- When hovering the mouse pointer over each rounded mark on the map, a new window will be displayed showing a table. This table contains the following information: Alarm name, date/time when the alarm was triggered, category and level of the alarm and a description of the alarm. (Figure 14.5 Stations and Alarms Information).

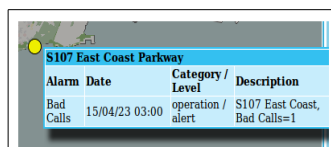


Figure 14.5 Information of the stations with alarms.

14.4 Monitoring alarms

Below the map, a table with information about the latest alarms is displayed. The table allows the user to see the alarm status of the data collection network. The alarms are defined in the Indico Alarms Module. Only the alarms of category *Operation* are listed.

14.4.1 Monitoring network status alarms

This table shows the active alarms of the monitoring network . The color indicates the alarm level.

The following information is shown in the table:

- Station name.
- Alarm type (defined in Indico Alarms Module).
- Day and time of occurrence.
- The category of the alarm (defined in Indico Alarms Module).
- Level of the alarm (defined in Indico Alarms Module).
- Description: station name and alarm details.

Monitoring Network Status Alarms					
Station	Alarm	Date	Category	Level	Description
S107 East Coast	Bad Calls	15/04/23 03:00	operation	alert	S107 East Coast, Bad Calls=1
S111 Scotts Road	Bad Calls	15/04/23 03:00	operation	alarm	S111 Scotts Road, Bad Calls=15

Figure 14.6 Monitoring network.

For example, in Figure 14.5 , the yellow color represents alert level and the red color

represents alarm level. Two stations had bad calls on the date 150423 at 03. The S107 had 1 bad call and the S111 had 15 bad calls.

14.4.2 Server status alarms

This table notifies you regarding server status alarms. The color identify the alarm levels.

The user gets the following information in this table:

- Station: server name.
- Alarm type, defined in Indico Alarms Module.
- Day and time of occurrence.
- The category of the alarm, defined in Indico Alarms Module.
- Level alarm, defined in Indico Alarms Module.
- Description: station name and alarm details.

Server Status Alarms					
Station	Alarm	Date	Category	Level	Description
Server	Disk Usage	15/04/28 03:00	operation	warning	Partition /usr/airviro, Used=95%

Figure 14.7. Server Status alarms

For example, in the Figure 14.7 , the orange color represents warning level. The alarm at 150428 and 03 registered a 95% disk use.